

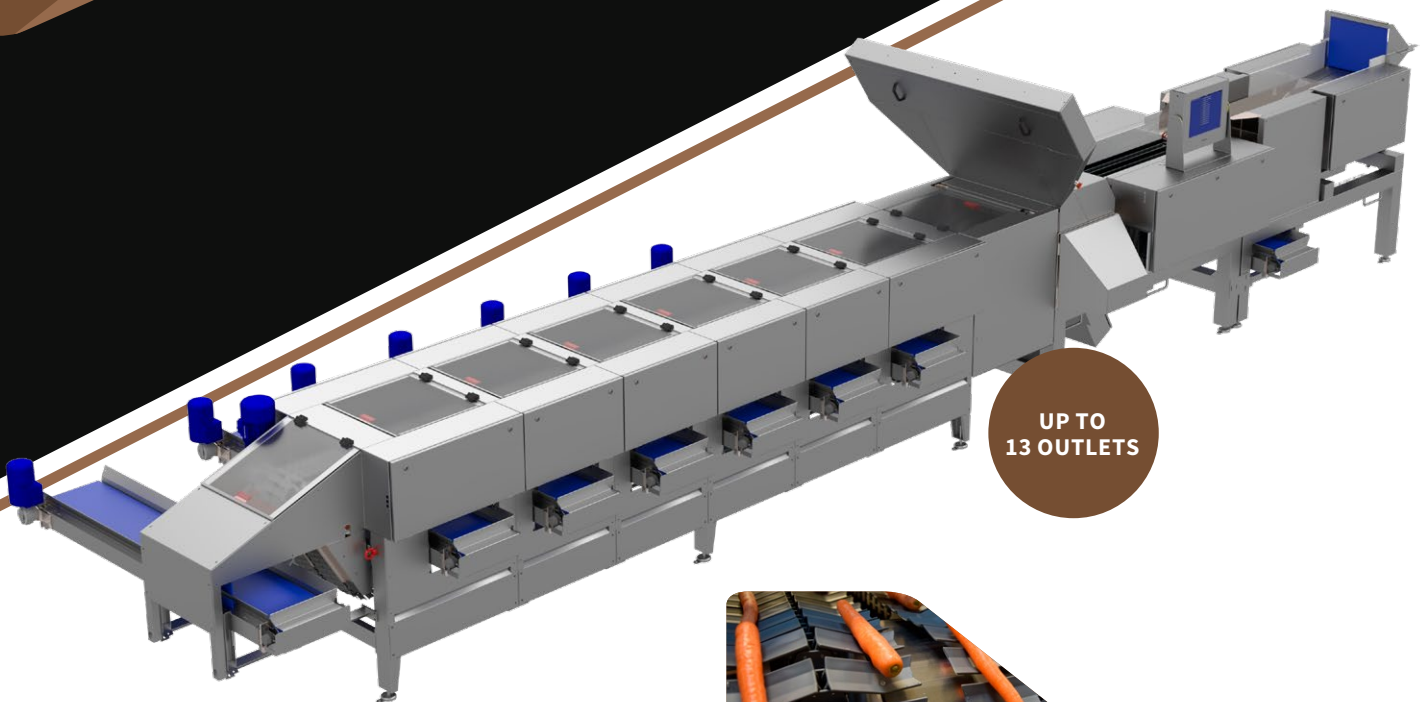


NEWTEC

OPTICAL SORTING MACHINE

CELOX-C-UHD, 4 LANES

NEW GENERATION
CAMERA PLATFORM



UP TO
13 OUTLETS



SPINAFLEX SECTION

Simultaneous sorting by quality, size and shape



Advantages

- Quality, size and shape sorting in one machine
- Accurate selection of high-value products
- Consistent quality output
- No need for mechanical pre-grading
- New generation camera platform
- Newtec WebServices for capturing of complete product information and remote servicing

Application

- Carrots



WEBSERVICES AVAILABLE
FOR REMOTE SERVICING

YOUR ADVANTAGES

- Optimal use of carrots with unique and world leading quality sorting
- Increased throughput
- Increased operational reliability
- Low maintenance cost
- Patented technology
- Unique and world leading quality sorting
- Gentle product handling
- Labour cost savings
- Modular and upgradable system
- Easy access for cleaning and service
- New LED light panels
- New generation camera platform
 - High colour consistency
 - High resolution: 1 pixel = 0.08 mm²

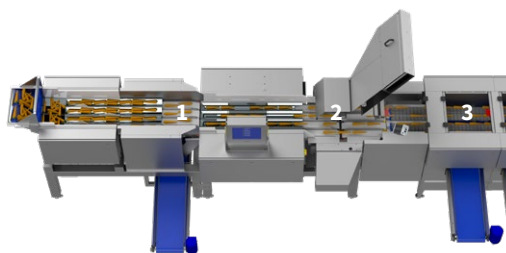
CELOX-C-UHD

4 LANES

Outlets	Length, mm (X1*)	Length, mm (X2*)
2+1	6864	1530
3+1	7484	2150
4+1	8104	2770
5+1	8724	3390
6+1	9344	4010
7+1	9964	4630
8+1	10584	5250
9+1	11204	5870
10+1	11824	6490
11+1	12444	7110
12+1	13064	7730

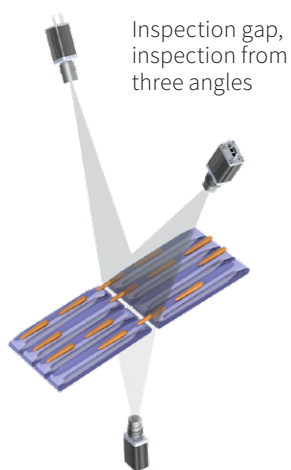
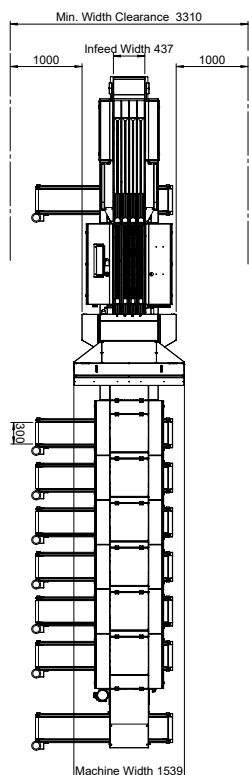
NEWTEC SOFTWARE

- Intuitive interface for configuring rules for sorting products by quality, size and shape
- Web-based user interface for convenient accessibility
- PLC connectivity for production line integration



- 1) Singulation unit (product separation)
- 2) Inspection unit (camera vision system)
- 3) Sorting unit (Newtec Spinaflex system)

OPTICAL SORTING MACHINE AVAILABLE WITH 4,8 OR 12 LANES



Capacity

4 lanes : up to 40,000 carrots/h
8 lanes: up to 80,000 carrots/h
12 lanes: up to 120,000 carrots/h

Electrical requirement

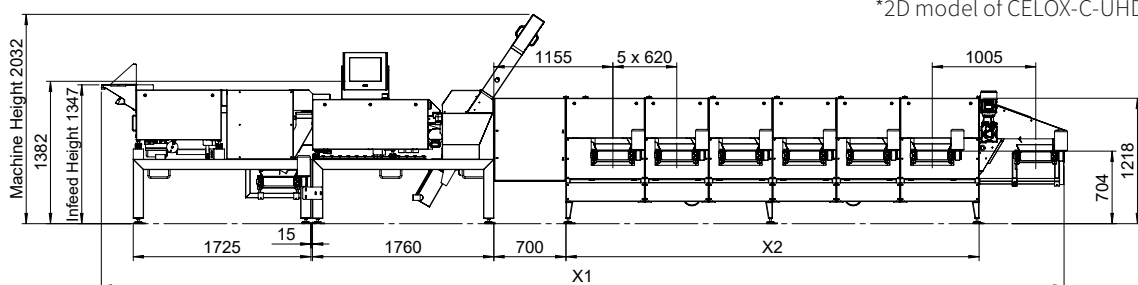
3x400V+N+PE, 20A

Environment

5°C – 40°C/41°F - 104°F

Weight

From 1200 kg - 4000 kg



*2D model of CELOX-C-UHD